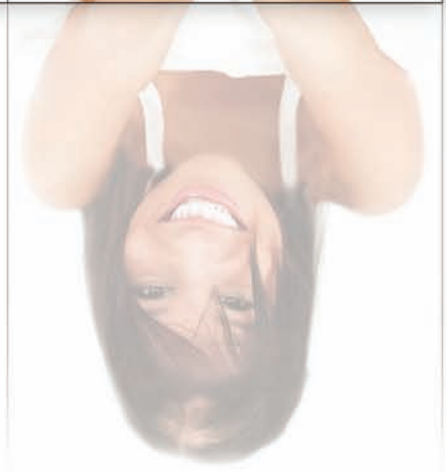




# INTERNATIONAL DESIGNS

---

C O R P O R A T I O N



Images have been altered and do not represent model's appearance

*Bringing You The World's Finest In Human Hair Designs*

2010 Catalog

# TABLE OF CONTENTS

Metropolitan Hair Replacement has secured its position as one of the most reliable wholesalers of Men's and Women's Pre-made and Custom Hair Replacements products worldwide. We are extremely focused on bringing exceptional quality hairpieces to the market at extremely affordable prices. Superior craftsmanship and only the highest quality materials is our commitment to hair replacement industry. Our products are made to the highest standards, using only the finest quality Human Hair and 100% Indian Remy Human Hair in the world.

## **MET MENS**

R271 Ultimate, R272 Ceo, R273 Commander | 3  
R215 GT Spider, R270 Professional, R274 XLT II | 4  
R210 Ventra graft XL, R219 XJ7 | 5  
R201 Champion, R223 Lifestyle | 6

## **ARCOS**

X602 RTW Pro, X612 RTW Boston | 8  
X607 RTW Ultraskin, X600 Eurotec | 9  
X603 RTW Medistar | 10

## **MET WOMENS**

R268 Ultra Lace, R280 Derma Lace,  
R281 Versa Lace | 11  
9110 Mono Back Short, 9111 Mono Back Long | 12  
9220 Mono Top Short, 9221 Mono Top Medium,  
9222 Mono Top Long | 13  
R250 Mono Plus, R251 Integra Lace,  
R252 Dermafill | 14  
R240 Mono Mini, R241 Mono Middie | 15

## **HAIRWEAR**

X140 Smart Part | 17  
X141 Wonder Fill | 18  
X142 Inter Great | 19  
X144 Volumize Her, X143 Add-A-Bang | 20  
x145 Complete Her | 21

## **HAIR EXTENSION**

Hair Extensions | 22  
Hair Extension Application | 23

## **CUSTOM MADE SOLUTIONS**

Information and Contact | 24

## **FORMS**

Custom Order Form | 25

## **SUPPLIES**

Adhesives, Bonders & Removers | 26

## **COMPANY POLICIES**

Terms of Sale and Return Policy | 27

Call today and start growing your business with Metropolitan Hair Replacement

# 1-800-327-7971

## R271 ULTIMA

**Type:** PROGRAM  
**Hair Direction:** FREESTYLE  
**Size:** 10" X 8"  
**Hair Length:** 6"  
**Density:** MEDIUM LIGHT  
**Curl Pattern:** 25-30MM  
**Hair Type:** HUMAN HAIR

**Details:** Ultra wafer-thin skin & lace base allows for ultimate comfort & breathability. A soft French lace front gives an extremely natural hairline & with V-looped knotting in skin area hair appears to be growing directly out of the scalp. Full skin bonding recommended.



## R272 CEO

**Type:** PROGRAM  
**Hair Direction:** FREESTYLE  
**Size:** 10" X 8"  
**Hair Length:** 6"  
**Density:** MEDIUM LIGHT  
**Curl Pattern:** 25-30MM  
**Hair Type:** HUMAN HAIR\*

**Details:** The CEO was designed to give the benefits of soft lace & ultra thin PU. An ample perimeter with a center connection of PU allows for various cut down options. A PU front gives maximum security in the front & a well ventilated French lace back. This base can work for most any client. Perimeter bonding is recommended.



## R273 COMMANDER

**Type:** PROGRAM  
**Hair Direction:** FREESTYLE  
**Size:** 9" X 7.25"  
**Hair Length:** 6"  
**Density:** MEDIUM LIGHT  
**Curl Pattern:** 25-30MM  
**Hair Type:** HUMAN HAIR\*

**Details:** The most versatile of the light weight program systems, thin skin perimeter with soft French lace top. Thin skin contours effortlessly & creates a second scalp appearance. Hair is v-looped throughout poly to ensure the most natural appearance possible. Perimeter bonding is recommended.



\*Colors based off of Men's Metropolitan Color Ring

Images have been altered and do not represent model's appearance

\*Introducing two new styles utilizing the most advanced grey technology. For colors with more than 50% grey - **HAIRBLEND** is used to deliver the most natural appearance. **CALL FOR DETAILS.**

## R215 GT SPIDER



**Type:** PROGRAM  
**Hair Direction:** FREESTYLE

**Size:** 10" X 8"

**Hair Length:** 4-6"

**Density:** MEDIUM LIGHT

**Curl Pattern:** 25-30MM

**Hair Type:** HUMAN HAIR

**Details:** A lightweight French lace unit with reinforced spider web stitching throughout for added durability. Ultra light, soft & cool to wear. Includes a very PU perimeter in the back and sides for extra durability. Program system should be refreshed every 4-5 weeks. Full skin bonding recommended.

## R270 PROFESSIONAL



**Type:** PROGRAM

**Hair Direction:** FREESTYLE

**Size:** 10" X 8"

**Hair Length:** 6"

**Density:** MEDIUM

**Curl Pattern:**

25-30MM

**Hair Type:** HUMAN HAIR

**Details:**

Our PROFESSIONAL is a stretchable thin 1 & 1/2" - 2" PU Perimeter base with a lightweight mono center for maximum breathability. Our SF-Welded Mono Front gives an extremely natural appearance at front with maximum longevity. This unit combines all the advantages of a more durable PU unit with the extreme ventilation and breathability of Mono. Thin enough to be worn for programs yet durable enough to use as standard wear. Perimeter Bonding or Bonding Strips recommended.

## R274 XLT II

**Type:** PROGRAM

**Hair Direction:** FREESTYLE

**Size:** 10" X 8"

**Hair Length:** 6"

**Density:**

MEDIUM LIGHT

**Curl Pattern:**

25-30MM

**Hair Type:**

HUMAN HAIR

**Details:** The ultimate in second skin units.

Hair appears to be growing directly out of the scalp with

"real-grow" technology. This ultra thin skin unit is lightweight, stretchable & contours to the head beautifully. Our thinnest, lightest and most natural skin system yet. Full skin bonding recommended.



\*Colors based off of Men's Metropolitan Color Ring

Images have been altered and do not represent model's appearance

## R210 VENTRAGRAFT XL

**Type:**  
EXTENDED  
PROGRAM

**Hair**

**Direction:**  
FREESTYLE

**Size:** 10" X 8"

**Hair Length:** 6"

**Density:**  
MEDIUM

**Curl Pattern:**  
25-30MM

**Hair Type:**  
HUMAN HAIR

**Details:**

The ultimate in lace units. A single layer of welded mesh is lightweight & comfortable. Multiple rows of reinforced stitching allow this unit to be cut down to any size or shape with ease and it will maintain its integrity. Reinforce stitched front hairline allows for scalloped hairline at any size. This base design lends itself to many attachment options.

## R219 XJ7

**Type:**  
EXTENDED PROGRAM

**Hair Direction:**  
FREESTYLE

**Size:** 10" X 8"

**Hair Length:** 6"

**Density:**  
MEDIUM

**Curl Pattern:** 25-30MM

**Hair Type:**  
HUMAN HAIR

**Details:** A great blend of durability & appearance. The disappearing front hairline is achieved with an ultra thin scalloped skin front perimeter sealing a base of comfortable yet durable Fine Mono Mesh. This base design lends itself to perimeter bonding, bonding strips or clip attachments.



\*Colors based off of  
Men's Metropolitan  
Color Ring

Images have been altered and  
do not represent model's appearance

## R201 CHAMPION

**Type:** EXTENDED PROGRAM  
**Hair Direction:** FREESTYLE

**Size:**  
9.5" X 7.5"  
**Hair Length:**  
6"

**Density:**  
MEDIUM  
**Curl Pattern:**  
25-30MM

**Hair Type:**  
HUMAN HAIR

**Details:** The most durable of all our systems, a combination of fine nylon mesh & poly reinforced silk perimeter. A slightly recessed front hairline intended for older client that will also appreciate the thicker appearance of a heavier density system. The cut away options allow for easy size modification & can be cut down to fit any client. This base design can be clipped on, taped, sewn or perimeter bonded-the possibilities are endless.



## R223 LIFESTYLE

**Type:** EXTENDED PROGRAM

**Hair Direction:**  
POMPADOUR

**Size:** 9" X 7"

**Hair Length:** 6"

**Density:** MEDIUM

**Curl Pattern:**  
25-30MM

**Hair Type:**  
HUMAN HAIR

**Details:** A new classic in extended durable design. A scalloped all skin V-looped front is virtually undetectable. Fine nylon mesh top is comfortable yet durable. Reinforced PU perimeter can be cut down to 7 x 4 1/2 and may be used as daily wear or extended system.



\*Colors based off of Men's Metropolitan Color Ring

Images have been altered and do not represent model's appearance

## The Ready to Wear Collection

Ready to Wear Hair utilizes the most advanced technologies & concepts on the market today! The only Hair Replacement line designed to be applied, styled & maintained effortlessly.

### IT'S AS EASY AS 1..2..3!!

1. Determine which system best fits clients lifestyle & needs
2. Match clients perimeter hair to our Men's Arcos Color Ring
3. Apply system using specialized adhesive strips or adhesive

### READY TO WEAR FEATURES:

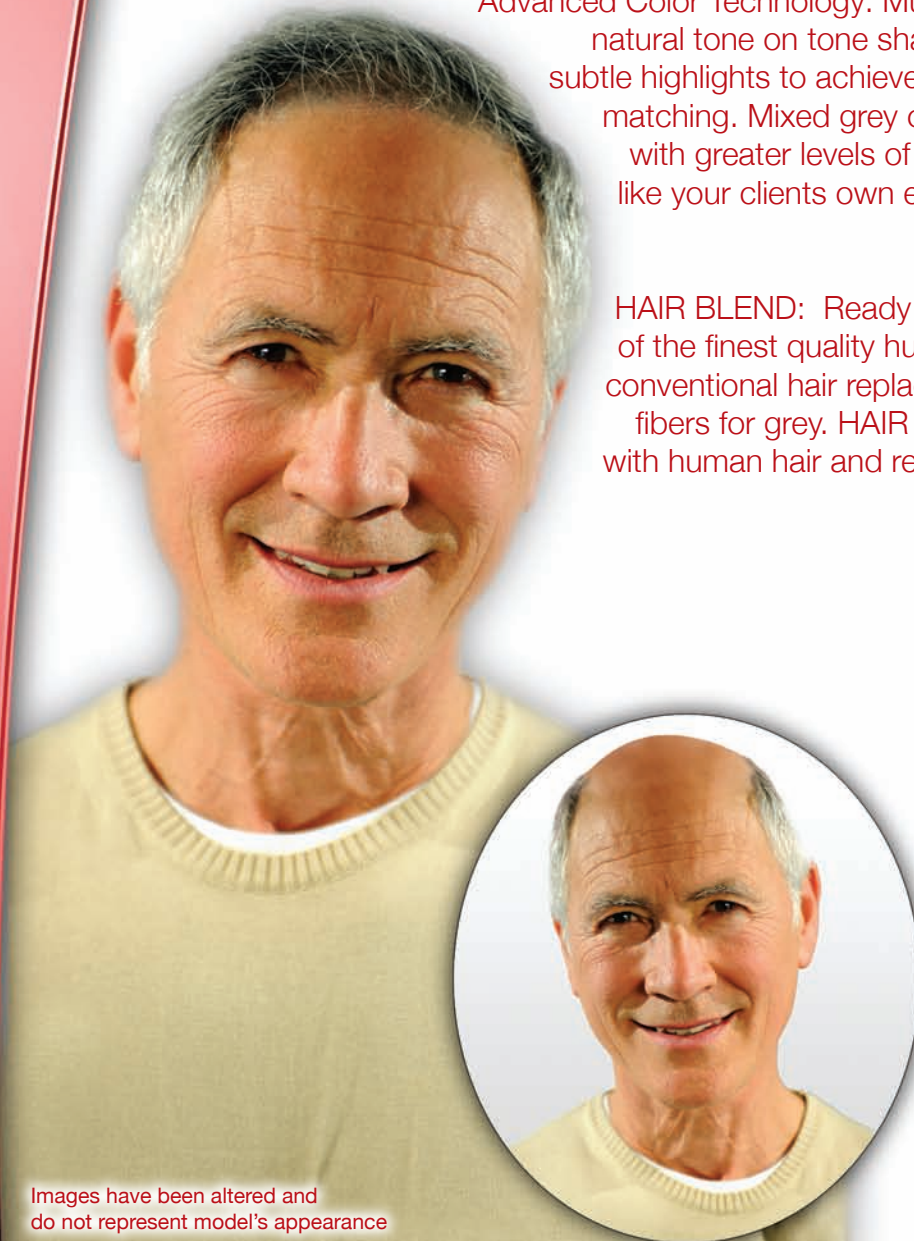
**Professionally Pre-styled:** Varying lengths of hair are used to create a system that is ready to wear with minimal cutting or blending necessary. Hours of time can be saved by using a pre-styled Ready to Wear system, making it possible for you to incorporate and offer hair replacement services in a salon atmosphere in less than 1 hour.

**Advanced Color Technology:** Multiple colors are blended to create more natural tone on tone shades. Ready to Wear pieces incorporate subtle highlights to achieve the most natural appearance and color matching. Mixed grey colors mimic the natural graying process with greater levels of grey in the temples and rear sides more like your clients own existing greying hair. 30 unique shades & mixed greys available.

**HAIR BLEND:** Ready to Wear systems utilizes a unique blend of the finest quality human hair and heat resistant fibers unlike conventional hair replacement solutions that only use synthetic fibers for grey. HAIR BLEND offers all the benefits of working with human hair and reduces the discoloring, fading and timely maintenance.

### BENEFITS OF READY TO WEAR

- Application & cutting in less than 45 minutes
  - Minimal prep time
- Most natural appearance
  - Best control of style and density
  - Highest quality hair & workmanship
- Designed to maximize durability & comfort



Images have been altered and do not represent model's appearance

## X602 RTW PRO

# ARCOS

**Type:**  
EXTENDED

**Hair Direction:**  
LEFT PART

**Size:** 10" X 8"

**Hair Length:**  
2" - 2.75"

FRONT & TOP  
3.25" - 4"

SIDES & BACK

**Density:**  
LIGHT TO MEDIUM

**Curl Pattern:**  
20 MM FRONT & TOP / 25 MM SIDES & BACK

**Hair Type:** HUMAN HAIR

**Details:** A medium mesh top with reinforced double lace front features patented stabilizing stitching and a seamless top to front lace transition. Welded mono top is durable while remaining comfortable and breathable. Sides and back are reinforced PU/Silk ideal for perimeter bonding or taping. Front edge is extended single scalloped lace for natural hairline.



## X612 RTW BOSTON

**Type:**

EXTENDED

**Hair Direction:**

FREESTYLE

**Size:** 10" X 7.5"

**Hair Length:**

3" - 4" ALL OVER

**Density:**

LIGHT TO MEDIUM

**Curl Pattern:**

20 MM FRONT & TOP / 25 MM SIDES & BACK

**Hair Type:**

HUMAN HAIR

**Details:** A great blend of durability & function, the base design is an improved classic in Ready to Wear lengths. This Mono Mesh top is durable while remaining comfortable and breathable. This lace front features a double layer of reinforced stitched lace for clean hassle free bonding. Sides and back are reinforced PU ideal for customization & one of a kind fit. Front edge is extended single scalloped lace for natural hairline. This unit contours to the head beautifully!



\*Colors based off of  
Men's Metropolitan  
Color Ring

Images have been altered and  
do not represent model's appearance



## X607 RTW ULTRASKIN

**Type:**  
EXTENDED

**Hair Direction:**  
FREESTYLE

**Size:** 10" X 8"

**Hair Length:**  
3" - 4" ALL OVER

**Density:**  
MEDIUM LIGHT

**Curl Pattern:**  
40 - 45mm

**Hair Type:**  
HUMAN HAIR

**Details:**

An exceptionally durable thin PU/silk base. The unique microfibre tear-proof netting is reinforced with second skin PU material which guarantees a long lasting all skin unit. This base is especially lightweight and stretchable, yet remarkably durable for thin PU. Featuring single hair "real-grow" ventilation.



## X600 EUROTEC

**Type:**  
EXTENDED

**Hair Direction:**  
FREESTYLE

**Size:**  
10" x 7.5"

**Hair Length:**  
5" - 7" ALL OVER

**Density:**  
MEDIUM LIGHT  
TO MEDIUM

**Curl Pattern:**  
20 MM FRONT & TOP / 25 MM SIDES & BACK

**Hair Type:** HUMAN HAIR

**Details:** Our most popular solution features a soft Mono Mesh top & silky double layer lace front. This lace front is versatile & well made with double layer lace & extended single lace hairline. PU coating is ample from temple to temple for superb fit & comfort.



\*Colors based off of  
Men's Metropolitan  
Color Ring

Images have been altered and  
do not represent model's appearance

## X603 RTW MEDISTAR

# ARCOS

**Type:** EXTENDED

**Hair Direction:** LEFT PART

**Size:** 22" - 23" CIRCUMFERENCE

**Hair Length:** 2" - 2.5" ALL OVER

**Density:** LIGHT TO MEDIUM LIGHT

**Curl Pattern:** 35MM ALL OVER

**Hair Type:** HUMAN HAIR

**Details:** Our Men's Full Cap MEDISTAR is carefully designed and handcrafted with those suffering from medical hair loss in mind. Featuring a Fine Mono Top with lightweight Hexagonal Netting, Reinforced PU sides and back along with adjustable elastic bands offers security without compromising comfort. The STAR of our RTW Collection.



\*Colors based off of Men's Metropolitan Color Ring

Images have been altered and do not represent model's appearance

1-800-327-7971

## R268 ULTRA LACE

**Type:** STANDARD

**Hair Direction:**  
FREESTYLE

**Size:** 21" - 21.5"  
CIRCUMFERENCE

**Hair Length:** 16" - 18"

**Density:** MEDIUM

**Curl Pattern:** 30-35 MM

**Hair Type:** HUMAN HAIR

**Details:** Made with an ample

French Lace Front, this 100% Hand-Tied Mono Top full-cap is carefully crafted for an exceptionally natural finished appearance. Featuring an Invisible Lace Front, scalp like Mono Top parting and stretchable net back this is the ultimate in full cap designs. Our hand-tied construction offers the most lightweight comfortable fit available. Made with the Finest Indian Human Hair.



## R280 DERMA LACE

**Type:** STANDARD

**Hair Direction:** FREESTYLE

**Size:** 21.5" CIRCUMFERENCE

**Hair Length:**  
16" - 18" ALL OVER

**Density:** MEDIUM LIGHT

**Curl Pattern:** 30 MM

**Hair Type:** HUMAN HAIR

**Details:** Our Derma Lace medical prosthesis is extremely durable and versatile. This 100% hand-tied lace replacement is exceptionally crafted with a durable polyurethane area for bonding & permanent wear. Featuring an invisible lace front, scalp like mono top the styling possibilities are endless. Slightly reinforced polyurethane cut-away stitching will allow you to alter, trim and fit virtually any wearer with minimal effort. Nothing beats the fit, versatility or comfort of this improved design. Made with the Finest Indian Human Hair.



## R281 VERSA LACE

**Type:** PROGRAM

**Hair Direction:** FREESTYLE

**Size:** 21" - 21.5" CIRCUMFERENCE

**Hair Length:** 12" - 14"

**Density:** MEDIUM

**Curl Pattern:** 30-35 MM

**Hair Type:** HUMAN HAIR

**Details:** A versatile full cap solution created with style, comfort & versatility in mind. This solution features a soft natural lace front that blends into the hairline effortlessly. Handcrafted to perfection, the Versa Lace can be styled to provide virtually any client with their ideal solution. The Fine mono top & back were designed with your client's ultimate comfort in mind. A PU-Silk perimeter allows for secure attachment. The Versa Lace is the perfect solution for clients seeking an exceptionally crafted, lightweight, full cap program solution.



\*Colors based  
off of Womens  
Metropolitan  
Color Ring

## 9110 MONO BACK SHORT



**Type:** PROGRAM

**Hair Direction:**  
FREESTYLE

**Size:** 21.5"  
CIRCUMFERENCE

**Hair Length:** 2" - 6"

**Density:** MEDIUM

**Curl Pattern:** 35-40 MM

**Hair Type:** HUMAN HAIR

**Details:** These new and improved Mono Back styles feature a soft lace front that delivers an exceptionally natural appearance. This base is constructed of carefully machine calibrated wefting with a silky second layer back for added comfort. The stretchable second layer is lightweight, comfortable and adjustable. A classic pre-styled human hair solution that offers superb comfort and versatility. Designed with the medical hair loss client in mind, Mono Back is an affordable temporary solution that maximizes comfort & style. Dermafix anti-slip skin can be added to the Mono Back for a custom fit solution without the wait. Made with the finest quality Indian Human Hair.

## 9111 MONO BACK LONG



**Type:** PROGRAM

**Hair Direction:** FREESTYLE

**Size:** 21.5"  
CIRCUMFERENCE

**Hair Length:** 8.5" - 13.5"

**Density:** MEDIUM

**Curl Pattern:** 35-40 MM

**Hair Type:** HUMAN HAIR

**Details:** These new and improved Mono Back styles feature a soft lace front that delivers an exceptionally natural appearance. This base is constructed of carefully machine calibrated wefting with a silky second layer back for added comfort. The stretchable second layer is lightweight, comfortable and adjustable. A

classic pre-styled human hair solution that offers superb comfort and versatility. Designed with the medical hair loss client in mind, Mono Back is an affordable temporary solution that maximizes comfort & style. Dermafix anti-slip skin can be added to the Mono Back for a custom fit solution without the wait. Made with the finest quality Indian Human Hair.

\*Colors based  
off of Womens  
Metropolitan  
Color Ring

## 9220 MONO TOP SHORT

**Type:** STANDARD  
**Hair Direction:** FREESTYLE  
**Size:** 21.5" Circumference  
**Hair Length:** 2" - 6"  
**Density:** MEDIUM  
**Curl Pattern:** 35-40 MM  
**Hair Type:** HUMAN HAIR

**Details:** Our MONO TOP Human Hair Wigs are the ultimate in design, comfort and quality. A Hand-made MONO TOP and silky second layer offer superb comfort & style versatility. They are professionally Pre-Styled but can be cut to suit a variety of clients. A combination of hand-made MONO TOP with silky second layer; plus calibrated machine sides and back complete this carefully crafted style. A PU Tape patch at front and sides allows for secure attachment. Elastic back size adjustment offers secure comfortable fitting. Optional Felt Temple Tabs included. Made with the finest Indian Human Hair. Short to Long Styles Available.



## 9221 MONO TOP MEDIUM

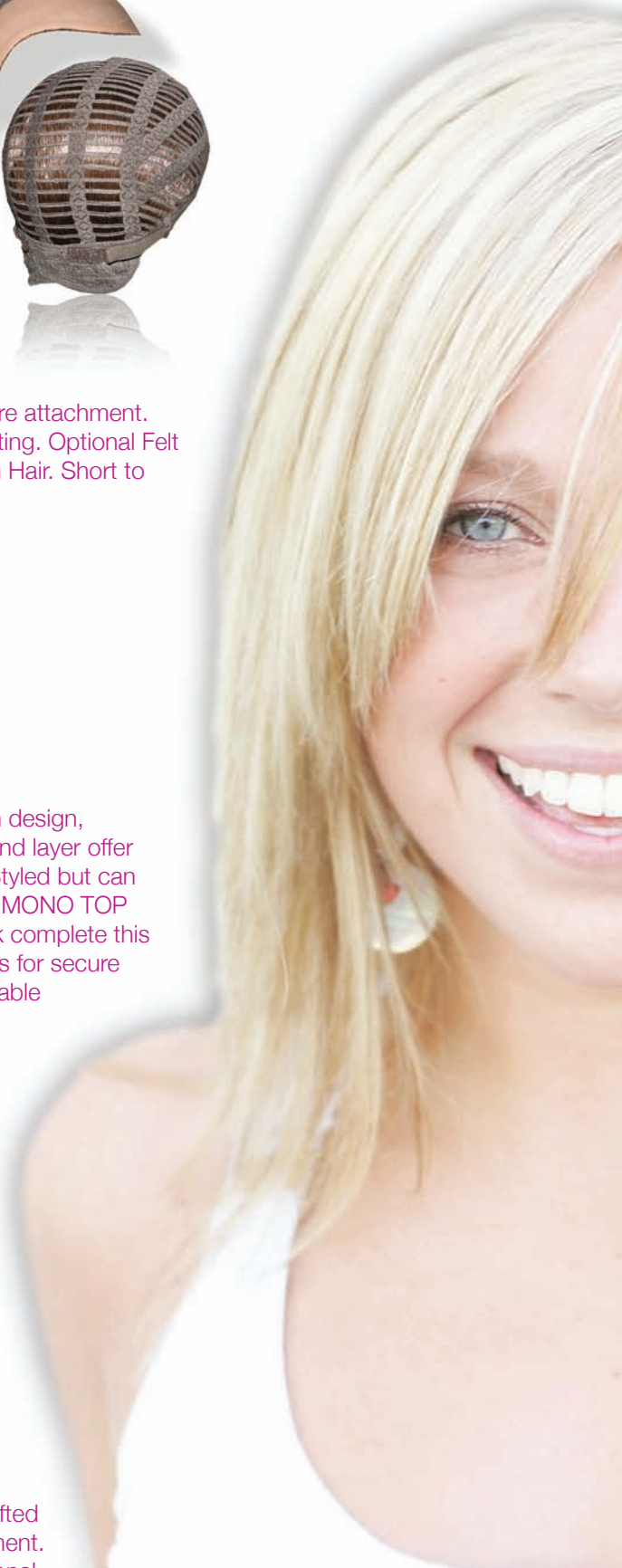
**Type:** STANDARD  
**Hair Direction:** FREESTYLE  
**Size:** 21.5" Circumference  
**Hair Length:** 4.5" - 9.5"  
**Density:** MEDIUM  
**Curl Pattern:** 35-40 MM  
**Hair Type:** HUMAN HAIR

**Details:** Our MONO TOP Human Hair Wigs are the ultimate in design, comfort and quality. A Hand-made MONO TOP and silky second layer offer superb comfort & style versatility. They are professionally Pre-Styled but can be cut to suit a variety of clients. A combination of hand-made MONO TOP with silky second layer; plus calibrated machine sides and back complete this carefully crafted style. A PU Tape patch at front and sides allows for secure attachment. Elastic back size adjustment offers secure comfortable fitting. Optional Felt Temple Tabs included. Made with the finest Indian Human Hair. Short to Long Styles Available.

## 9222 MONO TOP LONG

**Type:** STANDARD  
**Hair Direction:** FREESTYLE  
**Size:** 21.5" Circumference  
**Hair Length:** 8.5" - 13.5"  
**Density:** MEDIUM  
**Curl Pattern:** 35-40 MM  
**Hair Type:** HUMAN HAIR

**Details:** Our MONO TOP Human Hair Wigs are the ultimate in design, comfort and quality. A Hand-made MONO TOP and silky second layer offer superb comfort & style versatility. They are professionally Pre-Styled but can be cut to suit a variety of clients. A combination of hand-made MONO TOP with silky second layer; plus calibrated machine sides and back complete this carefully crafted style. A PU Tape patch at front and sides allows for secure attachment. Elastic back size adjustment offers secure comfortable fitting. Optional Felt Temple Tabs included. Made with the finest Indian Human Hair. Short to Long Styles Available.



\*Colors based  
off of Womens  
Metropolitan  
Color Ring

## R250 MONO PLUS



**Type:** STANDARD  
**Hair Direction:** FREESTYLE

**Size:** 6 1/2" x 6"

**Hair Length:** FRONT 5" - 6"  
BACK 10" - 11"

**Density:** MEDIUM

**Curl Pattern:** 35mm

**Hair Type:** HUMAN HAIR

**Details:** A top of the head solution that provides moderate coverage and maximum versatility. Featuring an extended 1/8" Lace Front for the most natural hairline and ease of styling. A Fine Mono Mesh center and silky second layer was designed for the client looking for fullness due to thinning without having to commit to total hair replacement. Mono with Clips is an instant hair enhancement solution that can be taped, bonded or attached with clips. Made with the finest Indian Human Hair.

## R251 INTEGRA LACE



**Type:** STANDARD

**Hair Direction:**  
CENTER CROWN

**Size:** 8 1/2" X 7 1/2"

**Hair Length:** FRONT: 5" - 6"  
BACK: 10" - 12"

**Density:** MEDIUM

**Curl Pattern:** 35-40mm

**Hair Type:** HUMAN HAIR

**Details:** Integra Plus offers the security and versatility of perimeter attachment or removable combs. With a sheer top and extended lace front, the styling options are endless making this a necessary go to. A soft lace integrations material is used to ensure the most lightweight comfortable wear. Strong yet comfortable integration openings in the back allow you to control the volume & appearance of your client's hair making this a perfect solution for most any client. This is an instant solution for thinning, allow you to add just the right amount of fullness needed to give your client's and effortless carefree solution.

## R252 DERMAFILL



**Type:** STANDARD

**Hair Direction:** FREESTYLE

**Size:** 6" X 5"

**Hair Length:** 10" - 12"

**Density:** MEDIUM

**Curl Pattern:** 30-35mm

**Hair Type:** HUMAN HAIR

**Details:** The ideal skin-like solution for front, top of the head or crown enhancement. This pliable second skin base is thoughtfully handcrafted to virtually disappear and it appears as though hair is growing directly from the scalp. Using Dermafill adds just enough volume and fullness to enhance any style for a more natural appearance.

\*Colors based  
off of Womens  
Metropolitan  
Color Ring

## R240 MONO MINI

**Type:**  
PROGRAM

**Hair  
Direction:**  
FREESTYLE

**Size:**  
4.5" X 4.5"

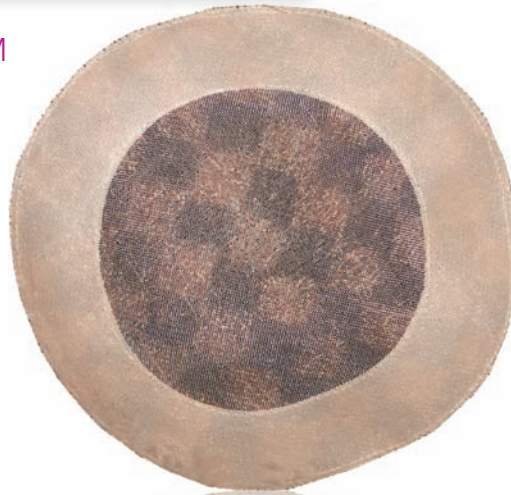
**Hair Length:**  
12-14"

**Density:**  
MEDIUM LIGHT

**Curl Pattern:**  
25 MM

**Hair Type:**  
HUMAN HAIR

**Details:** MONO MIDDIE gives you just enough coverage for smaller hair loss clients. Made with soft comfortable Fine Mono Mesh and features a PU Coated Perimeter all around. This piece can be taped, bonded or attached using clips. Under venting all around & made with the finest Indian Human Hair.



## R241 MONO MIDDIE

**Type:** PROGRAM

**Hair Direction:**  
FREESTYLE

**Size:** 6" X 6"

**Hair Length:** 14"

**Density:**  
MEDIUM LIGHT

**Curl Pattern:**  
25 MM

**Hair Type:**  
HUMAN HAIR

**Details:** A top of the head solution that provides moderate coverage & versatility. Featuring an extended 1/8" Lace Front. Fine Mono Mesh center with PU coated perimeter. Can be taped, bonded or attached with clips. Made with the finest Indian Human Hair.



\*Colors based  
off of Womens  
Metropolitan  
Color Ring

A percentage of women fall into a category that traditional solutions such as bonding, taping, shaving or wearing full wigs does not accurately address their hair loss needs. Some of these women typically turn away from hair replacement to find their solution.

**- Are you interested in offering the most innovative concepts & solutions guaranteed to address a growing need in woman's hair replacement?**

**- Ever asked yourself "what can I do to offer my clients a unique enhancement when shaving or bonding is not an option?"**

The Hairwear Collection is the answer! We are bringing you a line of women's top of the head solutions that require no shaving, no bonding or aggressive attachment methods. This unique collection is ideal for clients that are not prepared or far along enough in their hair loss for traditional hair replacement. Hairwear systems are advanced forward thinking concepts that deliver the ultimate in lightweight, natural hair enhancement. Hairwear allows you to add or enhance thinning areas quickly and gently without attachment directly to the scalp. Hairwear can be kept in stock and attached in minutes for an instant solution. We invite you to discover what some of the most elite hair professionals and salons already know. Hairwear is the future of second hair enhancements.

**H**airwear is handcrafted using only 100% Indian Remy Human Hair

**A**vailable in 20 beautiful and natural colors

**I**ngenious but simple application method using no tools or machines

**R**e-apply in less than 1 hour

**W**earers are guaranteed the most natural lightweight solution

**E**nables wearers a solution to evaluate if their hair loss is temporary

**A**ble to be custom ordered to any client's specific needs

**R**easonably priced & available for immediate applications



Images have been altered and do not represent model's appearance





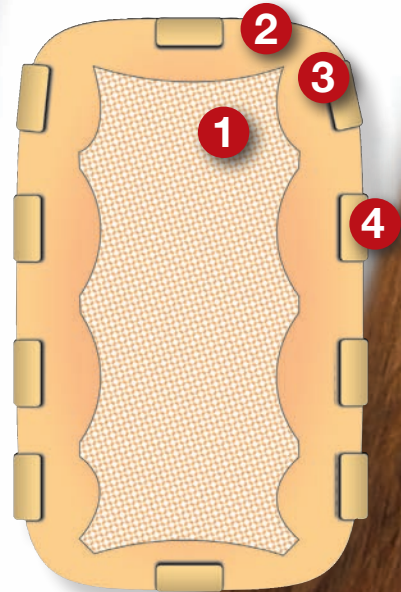
# HAIRWEAR

## X140 SMART PART

\*Colors based  
off of HotHeads  
HairWear  
Color Ring

**Size:** 6" x 2.5"  
**Hair Length:** 14" - 16"  
**Density:** Mono 70%  
NPU 90%  
**Curl Pattern:** 35-40MM  
**Hair Direction:** Freestyle  
**Colors:** Hotheads Hairwear  
Color Ring

- Technical Data:**
- 1 Fine Mono
  - 2 NPU
  - 3 Slit to bring hair through
  - 4 Attachment area



1-800-327-7971

\*Colors based  
off of HotHeads  
HairWear  
Color Ring

## X141 WONDER FILL

**Size:** 6.25" X 5"

**Hair Length:** 10"

**Density:** Mono 100%  
NPU 110%

**Curl Pattern:** 35-40MM

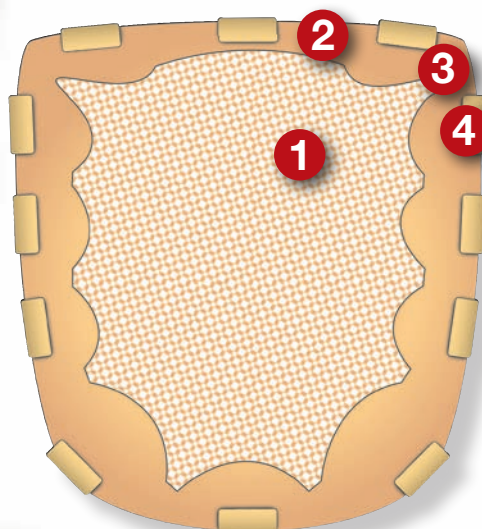
**Hair Direction:** Freestyle

**Hair Type:** 100 % Indo-Remi

**Details:** Hotheads Hairwear  
Color Ring

### Details:

- 1 Fine Mono
- 2 NPU
- 3 Slit to bring hair through
- 4 Attachment area



## HAIRWEAR

# HAIRWEAR

## X142 INTER GREAT

\*Colors based  
off of HotHeads  
HairWear  
Color Ring

**Size:** 7" X 5"

**Hair Length:** 10"

**Density:** 100%

NPU 110%

**Curl Pattern:** 35-40 MM

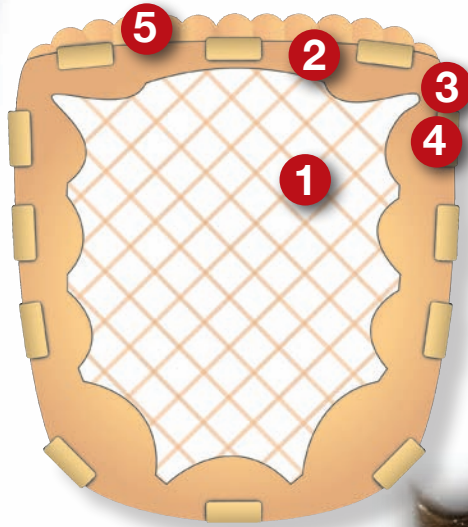
**Hair Direction:** Freestyle

**Hair Type:** 100% Indo-Remi

**Colors:** Hotheads Hairwear Color Ring

### Technical Data:

- 1 Fine Mono
- 2 NPU
- 3 Slit to bring hair through
- 4 Attachment area
- 5 Lace front



\*Colors based  
off of HotHeads  
HairWear  
Color Ring

## X143 ADD-A-BANG

**Size:** 2.75" x 5"

**Hair Length:** 9"-10"

**Density:** 100%

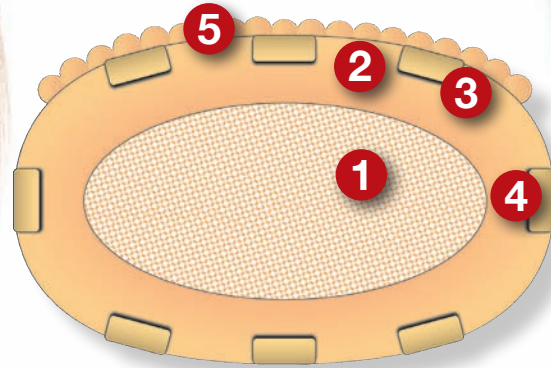
**Curl Pattern:** 35-40MM

**Hair Direction:** Freestyle

**Colors:** Hotheads Hairwear Color Ring

### Technical Data:

- 1 Fine Mono
- 2 NPU
- 3 Slit to bring hair through
- 4 Attachment area
- 5 Lace front



## X144 VOLUMIZE HER

**Size:** 3" x 3"

**Hair Length:** 9"-10"

**Density:** 100%

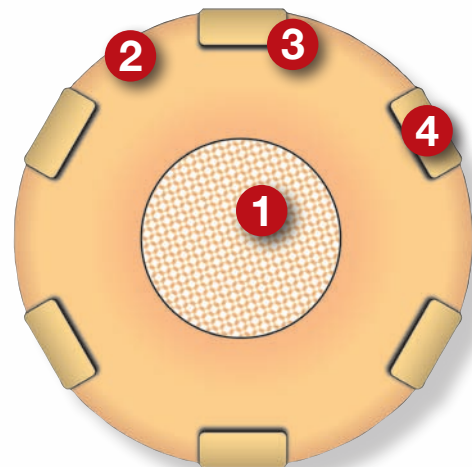
**Curl Pattern:** 35-40MM

**Hair Direction:** Freestyle

**Colors:** Hotheads Hairwear Color Ring

### Technical Data:

- 1 Fine Mono
- 2 NPU
- 3 Slit to bring hair through
- 4 Attachment area



# HAIRWEAR

## X145 COMPLETE HER

\*Colors based  
off of HotHeads  
HairWear  
Color Ring

**Size:** 21.5" Circumference

**Hair Length:** 9"-10"

**Density:** 100%

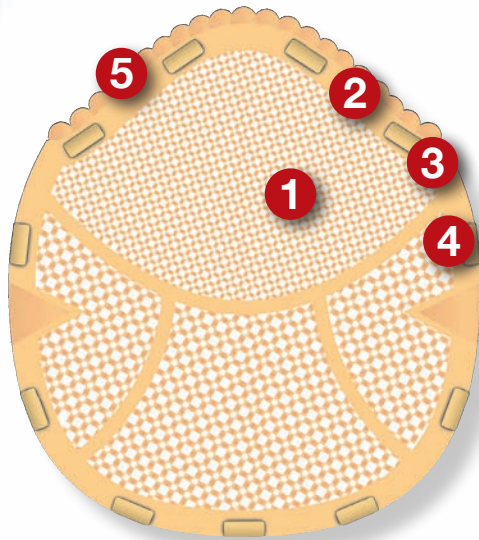
**Curl Pattern:** 35-40MM

**Hair Direction:** Freestyle

**Colors:** Hotheads Hairwear Color Ring

### Technical Data:

- 1 Fine Mono
- 2 NPU
- 3 Slit to bring hair through
- 4 Attachment area
- 5 Lace front



# REVOLUTIONARY SEAMLESS HAIR EXTENSION SYSTEM DEVELOPED BY HAIR REPLACEMENT PROFESSIONALS FOR YOUR THINNING HAIR CLIENTS

## HAIR EXTENSIONS

- ◆ Application in Less than 1 Hour
- ◆ Removal & Re-Taping in Minutes
- ◆ No Heat, No Tools, No Damage
- ◆ Tangle-Free, Lightweight, Undetectable
- ◆ 100% Indian Remy Cuticle-on Human Hair
- ◆ Add Volume Length Highlights
- ◆ 8-10 Weeks Between Services
- ◆ Several Lengths and Colors Available
- ◆ Use with Hairwear For a full Head Solution

### No Short Hair Returns

- Minimal prep time
- Most natural appearance
- Best control of style and density
- Highest quality hair & workmanship
- Designed to maximize durability & comfort

**EXTEND YOUR BOTTOM LINE BY OFFERING THE MOST ADVANCED HAIR EXTENSION SYSTEM AVAILABLE!!**



Simple ◆ Fast ◆ Extraordinary

# HAIR EXTENSIONS



# ALL YOU NEED IS A CLIP AND A COMB

OUR HAIR EXTENSIONS DO NOT REQUIRE ANY EXPENSIVE, DAMAGING TOOLS OR COSTLY AND LENGTHY CERTIFICATION CLASSES. THESE REVOLUTIONARY HAIR EXTENSIONS CAN BE APPLIED IN 45 MINUTES OR LESS.

1. SECTION HAIR STARTING AT THE OCCIPITAL BONE, WHERE YOU WANT TO ATTACH HAIR EXTENSIONS.

2. REMOVE THE EXTENSION FROM THE PALATE. PLACE THE EXTENSION WITH ADHESIVE SIDE FACING UPWARDS, OUT ABOUT 1/8" FROM SCALP FOR NATURAL COMFORT AND FLEXIBILITY.

3. COVER THE EXTENSION WITH A VERY THIN LAYER OF THE CLIENTS OWN HAIR, MATCHING THE DENSITY OF THE STRIP.

4. POSITION THE SECOND EXTENSION BAND ADHESIVE SIDE DOWN DIRECTLY OVER THE TOP OF THE FIRST BAND. PRESS THE TWO BANDS FIRMLY TOGETHER WITH YOUR FINGERS TO ASSURE A SECURE BOND.

5. THE EXTENSION APPLICATION IS COMPLETE!



Metropolitan Hair Replacement's goal is to offer the very best service and products to meet the ever-growing needs of our clients. Therefore, we are committed to providing exceptionally made custom order solutions and resources at affordable prices.

# CUSTOM MADE SOLUTIONS

We offer a wide range of pre-made stock options, however we can custom make virtually any type of solution you may design and offer invaluable support. Whether it's based on our own carefully designed pre-made styles or a unique solution you have created for that special client. We can modify any aspect of an existing stock unit or design to fit your specific needs. We are experts in the field of Hair Replacement and can assist you from start to finish. We can guide you step by step with all aspects of your order, from completing your order form to attaching your creation.

Our factories have decades of experience manufacturing hair replacement solutions. Our understanding of how to create superior products and process the finest hair in the industry is without equal. We offer comprehensive support material, resources and will guide you in creating the perfect solutions for your business and clients. Our E-Z Order Guide will provide you with all the resources needed to effortlessly deliver the your custom creations.

We require an order form for all custom made orders, please find a copy attached in our catalog for your convenience. For pricing, training and marketing information please contact our Custom Order Specialists today.

## 1-800-327-7971



1-800-327-7971

Images have been altered and do not represent model's appearance





# CUSTOM ORDER FORM



G Factory

日期 Date .....

Y Factory

客户分店 Hair Specialist: .....

网底打号 Seal-in Order No.: .....

账号 Account No.: .....

邮编 Zip: .....

网底印名 Seal-in Client's Name: .....

照普通货

Stock Style No. & Name to Copy: .....

数量 Quantity of - Units: ..... 外加前头 Extra Fronts: .....  普通订单 Regular Order  特急加费订单 Rush Order / Extra Charge

照普通尺寸 Stock Standard  头壳 Template  头模 Foam Block 网底尺寸 Size: 长度 Length ..... in X 宽度 Width ..... in

用发种类 Hair Type  人发 Human  割原发 Remy(Xtra Charge)  化纤发 Fiber  混合化纤发 Mix-Synthetic .....% 人发 HH..... %

白发 Grey Hair  白人发 Human  牛毛 Yak  化纤发 Synthetic  混合化纤发 Mix-Synthetic .....% 人发 HH..... %

勾发方向 Hair Direction:

左旋 Left Crown	中旋 Center Crown	右旋 Right Crown	左分发 Left Part	中分发 Center Part	右分发 Right Part	全后梳 Pompadour	自由式 Freestyle	其它 Other
<input type="checkbox"/>	<input type="checkbox"/>	<input type="checkbox"/>	<input type="checkbox"/>	<input type="checkbox"/>	<input type="checkbox"/>	<input type="checkbox"/>	<input type="checkbox"/>	<input type="checkbox"/>

发长 Hair Lengths: 前 Front ..... in 鬓 Temples ..... in  
 同普通发长 As Stock Design 顶 Top ..... in 边 Sides ..... in  
 全头一个尺寸 All Over ..... in 旋 Crown ..... in 后 Back ..... in

卷曲 Curling: 前 Front ..... mm 鬓 Temples ..... mm  
 同普通卷曲 As Stock Design 顶 Top ..... mm 边 Sides ..... mm  
 全头一个曲度 All Over ..... mm 旋 Crown ..... mm 后 Back ..... mm

密度 Density:	分布 Area	特稀 Extra Light	稀 Light	中等 Medium	中等偏密 Med/Heavy	密 Heavy	特密 Extra Heavy
	前/发际线 Front / Hairline	<input type="checkbox"/>	<input type="checkbox"/>	<input type="checkbox"/>	<input type="checkbox"/>	<input type="checkbox"/>	<input type="checkbox"/>
	分发/旋 Parting / Crown	<input type="checkbox"/>	<input type="checkbox"/>	<input type="checkbox"/>	<input type="checkbox"/>	<input type="checkbox"/>	<input type="checkbox"/>
	其它 Rest	<input type="checkbox"/>	<input type="checkbox"/>	<input type="checkbox"/>	<input type="checkbox"/>	<input type="checkbox"/>	<input type="checkbox"/>
	全头一样 All Over	<input type="checkbox"/>	<input type="checkbox"/>	<input type="checkbox"/>	<input type="checkbox"/>	<input type="checkbox"/>	<input type="checkbox"/>

前网尺寸 Lace Fronts:  1/8"  1/4"  1/2"  其它 Other....."

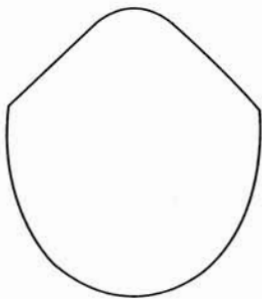
网底颜色 Base Colour .....

前头形状 Front-Contour #.....

前头波纹 Scallop #.....

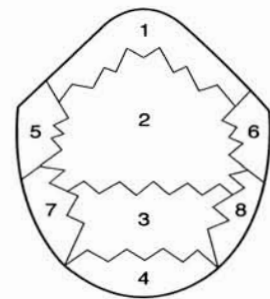
网底款式 Base Design:

详细 Details: (Draw Arrows)



- 胶边宽度 Width of Tape Patch ..... in
- 胶边宽度同普通 Tape Patch As Stock
- 胶边宽度照头壳 Tape Patch As Template
- 反面边 Underknotting  娃娃发 Baby Hair
  - 仅前部 Front Only
  - 鬓后鬓 Temple To Temple Back
  - 整圈周边 All Around
- 密度 Density
  - 稀 Light
  - 中等 Medium
  - 密 Heavy

白发及特殊色分布图 Grey & Special Color Map:



白发和特殊色 Grey & Special Colours:	# 1 Front	# 2 Top	# 3 旋 Crown	# 4 后 Back	# 5 左鬓 L.Temple	# 6 右鬓 R.Temple	# 7 左边 L.Side	# 8 右边 R.Side
<input type="checkbox"/> 共计白发 Total Grey								
<input type="checkbox"/> 外加白发 Add Grey	%	%	%	%	%	%	%	%
<input type="checkbox"/> 浅色发 Highlight								
<input type="checkbox"/> 点状色 Spot / Frosted	%	%	%	%	%	%	%	%
<input type="checkbox"/> 照毛样 Hair Sample (Attach Bag for Each)								
<input type="checkbox"/> 照色板 Color Ring								

特殊指示 Notes:



## DAILY WEAR

- R109 METRO STIXON FRONT CONTOUR STRIPS
- R111 METRO 1" CLEAR STRAIGHT STRIPS
- R110 HRS CONTAX CONTOUR STRIPS
- R196 HRS CLEAR CONTAX STRAIGHT STRIPS
- R114 CLEAR TAPE TOLL 1" X 3"
- R116 CLEAR ROLL 1/2" X 3"
- R117 STIXON CLOTH TAPE ROLL 1" X 3"
- R121 TRANSPORE TAPE ROLL 1" X 3" (1 SIDED)
- R450 TRANSLACE FRONT CONTOUR STRIPS
- R451 TRANSLACE 6" CONTOUR STRIPS

## EXTENDED WEAR

- R94 SUNSHINE FRONT CONTOURS
- R95 SUNSHINE REAR STRIPS
- R96 SUNSHINE 1" X 3 YRDS
- R97 STICK IT FRONT CONTOURS
- R98 STICK IT REAR STRIPS
- R99 STICK IT STRAIGHT STRIPS
- R93 STICK IT 1" X 3" ROLLS
- R84 SPOT ON
- R103 TROPICAL GRIP REAR STRIPS
- R104 TROPICAL GRIP FRONT CONTOUR STRIPS
- R112 TROPICAL GRIP ROLL 1" X 3"
- R154 TROPICAL GRIP BIGGIE ROLL 1" X 3 YRDS
- R452 SPORTSGRIP FRONT CONTOURS
- R453 SPORTSGRIP EURO 3" CONTOURS
- R463 SPORTSGRIP REAR STRIPS
- R457 DUAL GRIP FRONT CONTOURS
- R162 MUSTARD LINER FRONT CONTOUR STRIPS
- R144 MUSTARD LINER BIGGIE ROLL 3/4" X 36 YRDS
- R187 RED LINER FRONT CONTOUR STRIPS
- R178 RED LINER TAPE ROLL 3/4" X 36 YRDS

## PERMANENT WEAR

- R90 EAGLE GRIP FRONT CONTOURS
- R91 EAGLE GRIP REAR STRIPS
- R92 EAGLE GRIP ROLL 1" X 3"
- R467 BLUE GRIP BONDING STRIPS
- R466 REINFORCED TEMPLATE TAPE

## ADHESIVES

- R118 STIXON LIQUID ADHESIVE
- R119 HRS LIQUID ADHESIVE
- R120 HT BONDER 1 OZ (HARD BONDER)
- R89 EZ LACE ADHESIVE

## BONDERS

- R161 METRO BOND 107S (SILICONE) 8 OZ
- R159 METRO BOND 107R (RUBBER) 8 OZ
- R199 METRO BOND X (SILICONE) 4 OZ
- R459 LACE BOND (LACE) 5 OZ
- R460 SKIN & TRACK BOND (FOR LACE OR POLYMER) 4 OZ
- R468 NATURAL BOND (NON-LATEX LACE) 4 OZ

## CLEANSERS & REMOVERS

- R459 CITRO BASE CLEANER & ADHESIVE REMOVER
- X157 ARCOS SOLVENT
- R87 PREP IT
- R86 CLEAN IT 8 OZ
- R85 CLEAN IT 1 GALLON

## FOR PROFESSIONAL USE ONLY

Our commitment is to always deliver the safest and most effective adhesives to our customers. We strive to develop new & improved solutions and only offer the very best. We offer a wide range of specialized medical grade tapes, adhesives, bonders & prep solutions at affordable prices. Never a minimum order on supplies, however we encourage you to save by purchasing in volume. Call today and request a sample of our newest tapes.

# TERMS OF SALE AND RETURN POLICY

International Design Corporation strives to give you the best service possible. Your needs are very important and we all work towards satisfying them, one sale at a time.

**ACCOUNT SET-UP & FIRST ORDER:** In order to expedite your first order, we ask that you have the following information available when you are contacting us to set up your account or place your first order. For the fastest service, please fax us a copy of your business license & completed payment authorization. We only sell our products to licensed professionals. We will require a copy of your license on file to ship any orders.

**PAYMENT TERMS:** We accept American Express, MasterCard & Visa. Business checks, cashiers checks & COD terms upon approval. Credit authorization forms & credit applications available upon request. Our minimum order is \$40; order placed for products totaling less than \$40 will be subject to a handling charge. Customers are responsible for any NSF charges of \$50.00. Customer is responsible for any fees incurred for collection charges, charge backs, or freight charges for goods not returned correctly. By completing a payment authorization and placing first order, customer agrees to all credit, shipping and return policies of International Design Corp.

**RETURNS POLICY:** Returns must be pre-authorized within 5 days of receipt of goods & received back no later than 30 days from receipt. Please call for "Return Authorization" label and it will be mailed out to you immediately.

Parcels received without this Return Authorization label will automatically be refused by our warehouse.

Goods returned must be in factory condition. No credit will be issued for items altered (brushed, combed, picked, worn, chemically treated, washed, not in original packing).

Restocking Charge of \$10.00 per item applies to all returns. Subject to change.

We will gladly process any return within the terms of this agreement. However, no credit will be issued outside of this return policy.

Orders should be checked upon receipt; any missing or damaged goods should be communicated to our office immediately.

Pre-Made Stock & Custom Order Guarantee: All off our products are guaranteed against manufacturer defects.

Program Wear will be guaranteed against manufacturer defect for a period up to 6 weeks prorated.

Standard Wear will be guaranteed against manufacturer defect for a period up to 90 days prorated.

Daily Wear will be guaranteed against manufacturer defect for a period up to 6 months from date of shipping prorated accordingly.

Custom Made Solutions are made to order and non-returnable & non-refundable. Claims will be processed and orders remade in the event of a manufacturers defect or error. Claims must be initiated within 30 days of receipt. Custom-made solutions are guaranteed against manufacturers defect for a period up to 6 months from date of shipping. Please contact us immediately with any questions or concerns regarding your custom made systems.

Custom Made Solutions are unique handmade products and require an estimated 5-6 weeks for production. Full wigs, oversized & extra long length pieces may take additional time. Rush orders are available upon request-this is simply a request.

**NOTE:** Prices subject to change without notice. Please contact your account specialist for detailed pricing information if required. This catalog contains only our most recent offering- for new or discontinued items please contact your account specialist.



# INTERNATIONAL DESIGNS

---

C O R P O R A T I O N

3500 W. Hallandale Beach Blvd. Pembroke Park Florida 33023